

NEWBRIDGE

LOCAL GUIDE

County **Kildare**
Population **22742**
Area **6.26 km²**

Time Zone **GMT**
Climate **Cool Temperate Oceanic**
Mayor **Rob Power**

BYRNE MALONE'S LOCAL GUIDE TO NEWBRIDGE

Located on the banks of the Liffey, Newbridge makes the most of its prime recreational and environmental assets. Locals fish, walk, and enjoy the outdoor gym here and the linear park is also a haven for wildlife. "The road and rail access to the west of Ireland, the midlands, and the rest of the country is fantastic.

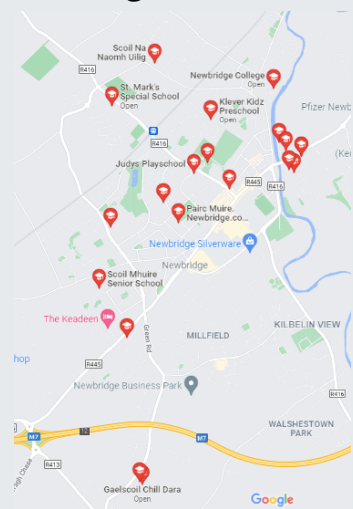
Schools

PRIMARY:

- Patrician Primary School.
- St Conleths and Marys National school.
- Holy family National School
- St Patricks Church of Ireland National school
- Gaelscoil Chill Dara
- Newbridge Educate Together

SECONDARY:

- Patrician Secondary School
- Holy Family Secondary School
- Newbridge College
- St Conleths Community College.



Food

Cafe/Restaurants

Market Kitchen: Market Kitchen Café and Restaurant offers breakfast, lunch and dinner from stylish surroundings within Michael Murphy Furniture at the heart of Newbridge. Ingredients are locally sourced and organic where possible.

DUBH:

Dubh describe themselves as a local neighbourhood bar/restaurant. Providing wonderful coffee, cocktails and food and an excellent wine menu, its well worth a visit.

Ponte Nuovo:

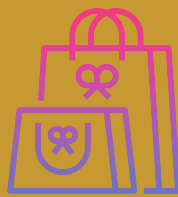
Italian fusion cuisine in a cosy setting, Ponto Nuovo is known for reasonable prices and an extensive menu. Based on the trendy pedestrian Georges St just a stones throw from Dubh the early bird is a must!

FUN FACTS ABOUT NEWBRIDGE

The river Liffey runs through the town.



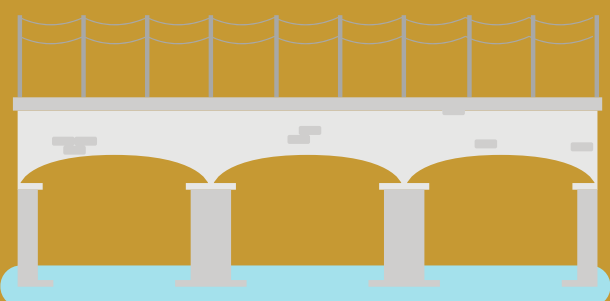
Known as a military town, The Curragh camp was developed in 1855 and the town continued to prosper until the withdrawal of British troops in 1922 with the birth of the Irish free state. After this the town experienced a decline but has seen a renewal in recent years.



The Irish language name of the town is the official name, "An Droichead Nua", meaning simply "The New Bridge" and was introduced in the 1930s



Newbridge is a shopping destination for many people in the Leinster region. Whitewater shopping Centre has many high street destination outlets such as Marks and Spencer's, Zara and H&M.



Takeaways

Luigi's Primo Takeaway

Pizzas, curry chips and traditional fish and chips, Luigi's Primo is Newbridge's traditional Italian takeaway.
(045) 433 962

Panda Inn

Very popular among locals, this Chinese takeaway can be ordered from Just Eat and on their own website.
(045) 436 565

Central Grill Newbridge

A Newbridge institution, The Central Grill serves Fish, Chips, Burgers, Onion rings etc. Always a firm favorite.
(045) 433 315

Jaipore Indian Restaurant

Glowing reviews for this Newbridge Indian Restaurant make it the most popular Indian takeaway in the town.
(045) 433 288

Transport and Travel

Train:

Station Address:

Iarnród Éireann, Station Road,
Newbridge, Co. Kildare

Contact Number: + 353 (0)45 431 219 or (0)1 836 6222 Calling from outside the Republic of Ireland +353 (0)1 836 6222

ATM: Yes

Opening Hours -

Staff Hours: Monday - Saturday:
06:00hrs - 23:00hrs Sundays and Bank
Holidays: 09:00hrs - 23:00hrs

Booking Office Hours: Monday -
Saturday: 06:00hrs - 23:00hrs Sundays
and Bank Holidays: 09:00hrs -
12:00hrs and 13:30hrs - 22:30hrs

Tickets:

Scan the QR code to purchase tickets



Bus:

Route 726:

To Dublin Airport every hour costing an estimated €10.

Route 129:

Provided by Kenneally's bus company. It has 9 stops departing from Newbridge College and ending in Avondale Drive. It departs once a day at 3.55pm.

126d - Dublin - Newbridge:

Runs regularly from Newbridge through Naas, Rathcoole, Bachelors Walk ending at DCU.

Leisure Activities

Liffey Linear Park

Liffey linear park is a fantastic public amenity, situated in the center of town and running along the banks of the Liffey it provides locals with walks, fairy trails, outdoor gym and lots of summer festivals.

Newbridge Silverware Visitor Center

The Newbridge Silverware Visitor Centre is highly recommended on the tourist trail of Ireland's Ancient East. The Visitor Centre houses the complete range of Newbridge Silverware products and some exclusive collections. It incorporates the award-winning **Domo's Emporium Café & Food Hall**, the famous free to enter **Museum of Style Icons** and the unique guided **Factory Tour**.

Riverbank Arts Centre

'Riverbank Arts Centre is a welcoming, friendly, accessible space to bring arts and culture to the centre of civic life and community in Newbridge and environs. We aim to germinate and generate a future audience for the arts in Newbridge and the wider county, by supporting lifelong participants and advocates for the arts.'
Linda Geraghty, Venue Director